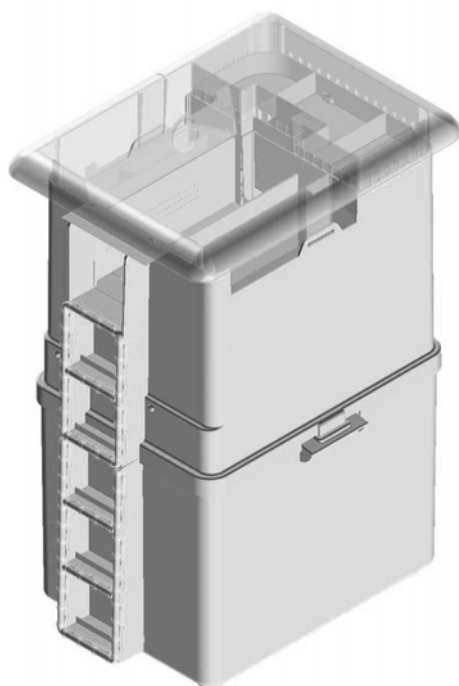


**ekomille**  
**1000**


# INSTRUCTION MANUAL and DECLARATION of CONFORMITY



Rev. 2.4En - 03/09/03

**Distributed by: Ekommerce srl**  
Website: [www.ekommerce.it](http://www.ekommerce.it) e-mail: [ekommerce@ekommerce.it](mailto:ekommerce@ekommerce.it)

# TABLE OF CONTENTS

<b>1 - PREFACE</b>	<b>pag. 3</b>
<b>2 - USEFUL INFORMATION</b>	<b>pag. 4</b>
<b>3 - PACKING CONTENTS</b>	<b>pag. 4</b>
<b>4 - ADVICE FOR AN EFFECTIVE CAPTURE</b>	<b>pag. 5</b>
<b>5 - INSTRUCTION FOR THE USE OF EKOMILLE</b>	<b>pag. 8</b>
<b>6 - CAPTURING CONTAINER AND HYGIENIC SAFETY</b>	<b>pag. 10</b>
<b>7 - CAPTURING COUNT AND VERIFICATION</b>	<b>pag. 11</b>
<b>8 - BATTERY AND FUNCTIONING TEST</b>	<b>pag. 12</b>
<b>9 - MECHANISMS AND RECHARGE OF THE MOTOR SPRING</b>	<b>pag. 13</b>
<b>10 - SENSOR</b>	<b>pag. 14</b>
<b>11 - MACHINE CLEANING</b>	<b>pag. 14</b>
<b>12 - ACCESSORIES AND SPARE PARTS</b>	<b>pag. 15</b>
<b>13 - GUIDE TO PROBLEM SOLUTION</b>	<b>pag. 17</b>
<b>14 - FREQUENTLY ASKED QUESTIONS</b>	<b>pag. 17</b>
<b>15 - GUARANTEE</b>	<b>pag. 19</b>
<b>16 - APICE PRODUCTS AND SERVICES DISTRIBUTION</b>	<b>pag. 20</b>
<b>17 - DECLARATION OF CONFORMITY </b>	<b>pag. 20</b>

# 1 - PREFACE

We thank you for having chosen **ekomille**, our electromechanical device which captures in a continuous way. This model is in conformity with CEE directives n. 89/392/CEE, 91/368/CEE, 93/44/CEE, 93/68/CEE and it is recognized by the Local Health Authorities (ASL), as being “in first place among struggle methods against rodents in the most delicate sectors, such as food and offices in general” in conformity with the Legislative Decree 155/97 (HACCP method) and UNI ISO Rules.

Before leaving the factory, the device has undergone to a strict testing to guarantee its maximum efficiency.

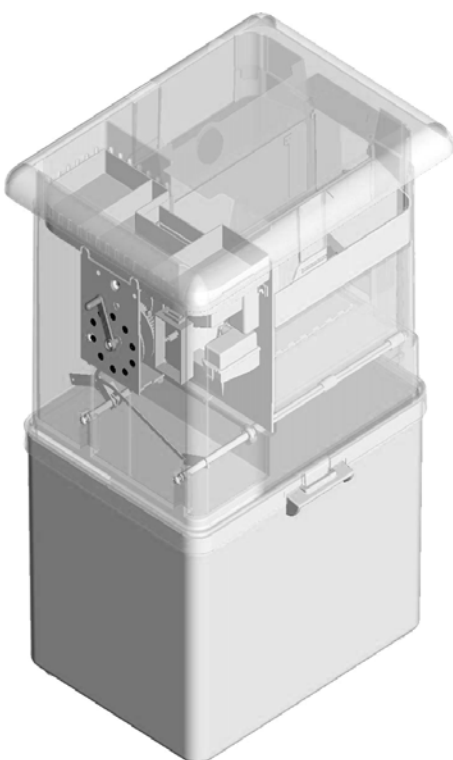
**It is opportune to read the present instruction manual carefully**, in order to obtain the best performance and guarantee the perfect working of the device.

**The instruction manual** is an integral part of **ekomille** and it must follow its life cycle for ten years, starting from the beginning of the service, even in the eventuality of its transfer to another user.

**APICE srl reserves a right to modify or improve the product described in this instruction manual, without any warning.**

We recommend reading and studying the present manual carefully, keeping it with care, in a suitable place.

If problems regarding **ekomille** or this manual arise, and for whatever other communication with the distributor, please always mention **the identification data** written on the device and on the conformity declaration (CE)



## **ATTENTION !!!**

On delivery verify that the device did not undergo any structural damage during transport, which could compromise its functioning and/or its safety.

## 2 - USEFUL INFORMATION

**Ekomille** is completely **ecological** because the food contained within and all its components are without toxic or poisonous substances.

The captures are made by an electromechanical system in combination with food substances, specifically chosen for this kind of animal.

The principal characteristics which made **ekomille** unique are:

- It captures mice **and rats too**;
- It captures continuously;
- It is ecological and hygienic;
- It has a continuous efficiency.

**Ekomille** has been studied to be located everywhere, either in open air or inside: **it can be placed under the rain, in hot or cold places.**

**Ekomille** is hygienically and technically safe, so perfectly compatible with human, domestic animal and food presence. The captured animals are kept in a container in which you can decide if you want to add water together with the antiputrefaction liquid **ekofix 40**.

There is no risk to whoever uses **ekomille**, because the machine is equipped with a safety device that blocks it as soon as you reach the cradle of mechanisms. The tampering with this safety device could compromise the functioning of the machine.

Switch off **ekomille** during cleaning or moving in order to avoid damaging it, due to its sensibility.

## 3 - PACKING CONTENTS

Inside the packing you can find:

- 1 - n.1 ekomille
- 2 - n.1 pair of gloves
- 3 - n.1 instruction manual
- 4 - n.1 bag of sunflower seeds
- 5 - n.1 sachet of pine-seeds
- 6 - n.1 sachet of pork fat
- 7 - n.1 small shovel
- 8 - n.1 plastic bag



## 4 - ADVICE FOR AN EFFECTIVE CAPTURE

To have a correct use of **ekomille** it is sufficient to consider some simple and basic advice:

- a) **Do not touch the inside parts, the ladder and the food substances with bare hands**. Always use gloves (the smell of the hands increase the diffidence of mice considerably);
- b) Do not place objects on **ekomille**: you risk to decrease its efficiency;
- c) Do not use other capture or control systems together with **ekomille**. Particularly the poisonous substances have a negative influence on the efficiency of the device;
- d) Put **ekomille** in correspondence with the mice den or where they go to eat (the capturing is quicker if you find the point in which mice feel more undisturbed). Usually, the areas used to pass from one point to another are not the best places to put the device. **This is very important especially where there is a lot of food.**
- e) Put **ekomille** with the ladder (**photo 1**) always turned towards a wall or towards any other element (a machinery, a heap of wood or straw, etc.), at a distance of about 10÷15 cm. In this way mice will have a higher feeling of protection and safety, so they will easily enter the device.
- f) If you put **ekomille** in a place in which the presence of mice is sure, **it is necessary to keep it switched off until they start eating the seeds contained inside the internal manger (photo 3)**. In foodless places it will occur from 1 to 5 days, otherwise in places with a large presence of food it will occur from 10 to 30 days, to overcome the diffidence of mice and to let the device acquire the suitable smell of the environment (**see expectation of capture time in the diagrams at page 7**).
- g) To avoid that the captured mice remain in the container for a long time, **it is useful to check the exterior dial of ekomille periodically**, to remove the animals indicated within.
- h) **ATTENTION!!! We warmly advise you against using only water in the capturing container!** Only if you add **ekofix 40**, you can get hygiene and it is possible to extend the removal time of animals, as indicated in the following table:

MAXIMUM TIME OF PRESERVATION (*)		
ROOM TEMPERATURE	WATER: litre 18 (without antiputrefaction effect)	EKOFIX 40: litre 10 WATER: litre 8
0°C ÷ 5°C	10 days	120 days
5°C ÷ 15°C	5 days	90 days
15°C ÷ 22°C	2 days	45 days
22°C ÷ 30°C	1 day	30 days
30°C ÷ 35°C	1 day	10 days
over 35°C	To use EKOFIX40 no diluted with water	

(\*) - The date are referred to:

- 1) Capture of few animals
- 2) At first use of EKOFIX

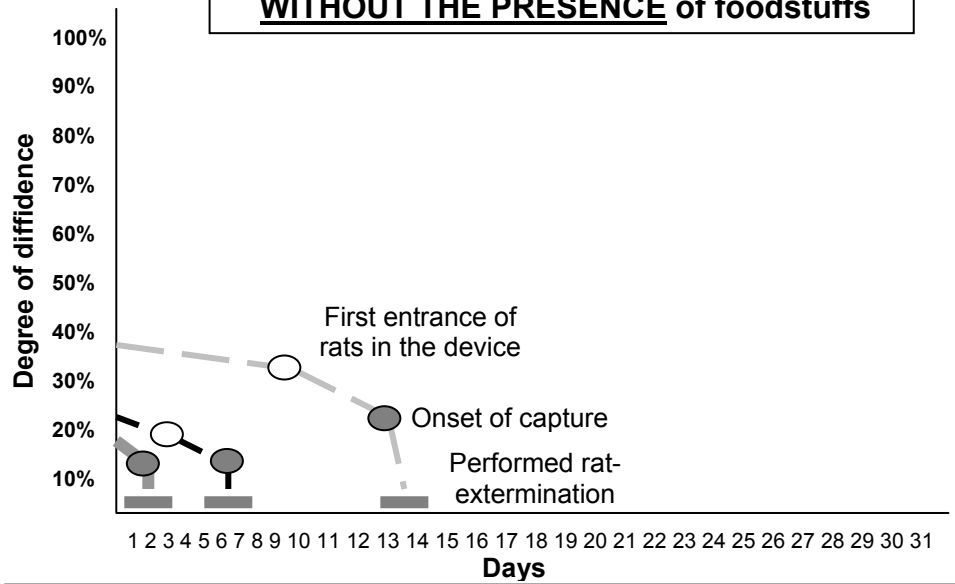
- i) In case the user of the machine should be absent for a long time, it is advisable to leave the device switched off and with a good availability of seeds. Once the user returns the capture of the arrived animals will be very simple.

***Photo 1 - Put ekomille with the ladder turned towards the wall or towards any other element***



## Forecast of the capturing time required in 3 main types of ambients

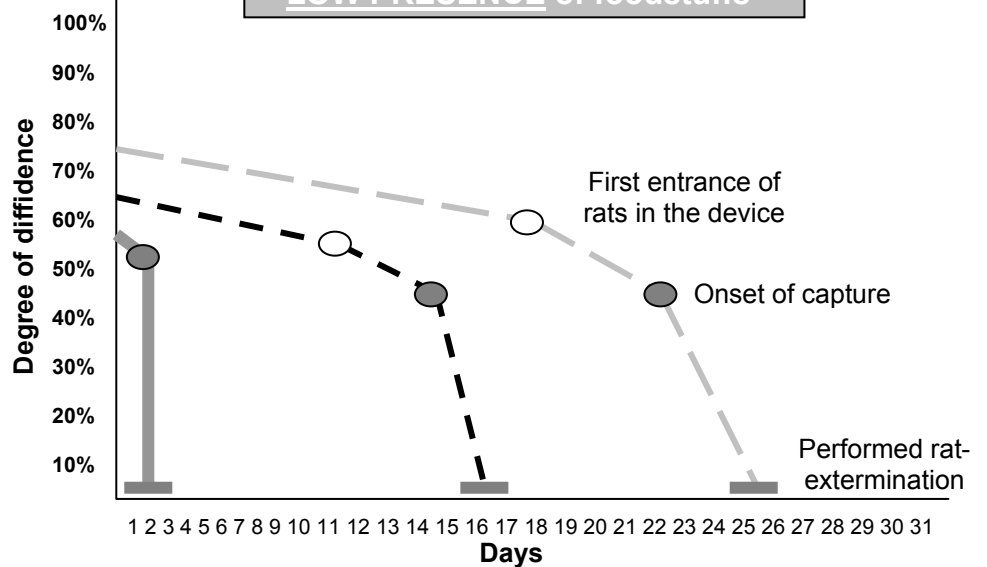
### WITHOUT THE PRESENCE of foodstuffs



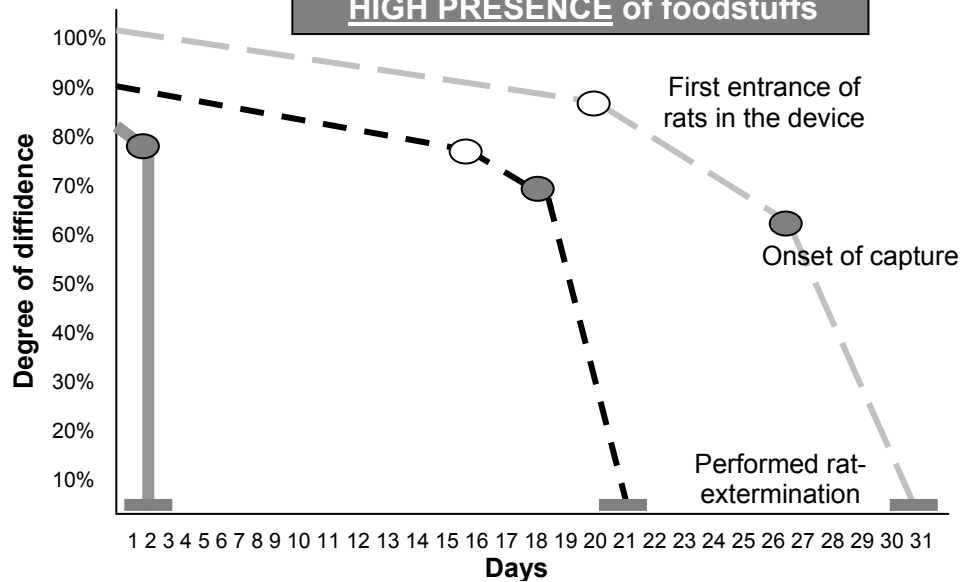
### LEGEND

- Rats just arrived
- Colony of rats present
- With the presence of poisons
- First entrance of rats in the device
- Onset of capture
- Performed rat-extermination

### LOW PRESENCE of foodstuffs



### HIGH PRESENCE of foodstuffs



## 5 - INSTRUCTION FOR THE USE OF EKOMILLE

To get **ekomille ready for use**, it is necessary to put the food given in the kit. The operation is very simple and it is sufficient to proceed along the following indications:

- a) Do not substitute the food with others containing poisons or chemical products: this will involve a lack of efficiency of the device for a long time, even after the removal of these substances!  
Use the food given in the kit, exclusively made up of **black sunflower seeds, pine-seeds, pork fat** and the possible presence of other **natural substances, without any added treatment**, which mice are used to eating in the place where **ekomille** is collocated.
- b) With the device switched off, after having removed the roof (**photo 9**) and the side coverings (**photo 2**), fill the manger with seeds (**photo 4**), the little feed-holder (**photo 5**) and the big feed-holder (**photo 6**), put a little bit of fat and some pine-seeds into the inside manger cup (**photo 3**).
- c) Starting from the entrance spread with a small amount of the fat given in the kit along the right side of the revolving plate (**photo 2**) mixing some seeds with it; repeat the same operation for the three other revolving plates paying attention to the following instruction carefully:

1. **Make sure that the manger and the feed-holders are in their place;**
2. Switch on the device;
3. **Skim softly** the sensor with a pencil or a similar object, paying attention to the immediate rotation of the revolving plates (**photo 3**);
4. Put the fat on the revolving plate and put the seeds on the fat, as above described.

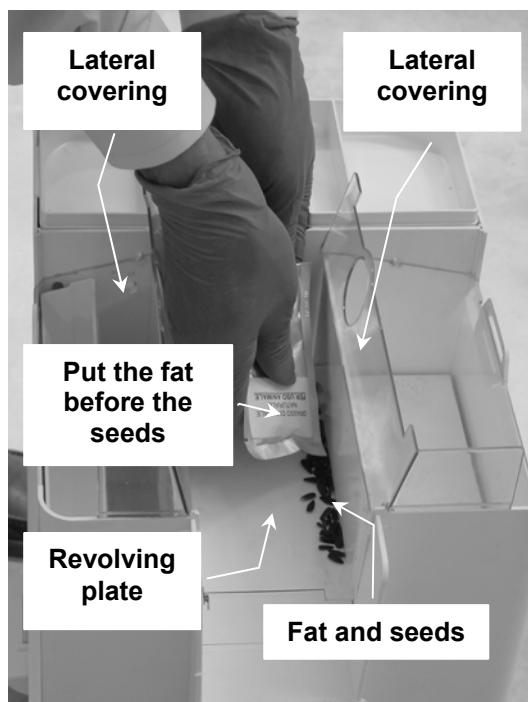
Make sure that there are always small amounts of fat, some seeds and pine-seeds even on the stairs of the ladder (**photo 7**).

- d) The food used has a length of 3 months. In case it is used in places having an optimal microclimate, the length could be higher, therefore it will be enough a visual check to verify the preservation of the food.
- e) but if **ekomille** is in a very humid place we recommend controlling the eventual mould forming; in this case it is opportune to change it with a fresher one.
- f) In case the food is taken (with the device switched off), refill the container with other seeds.

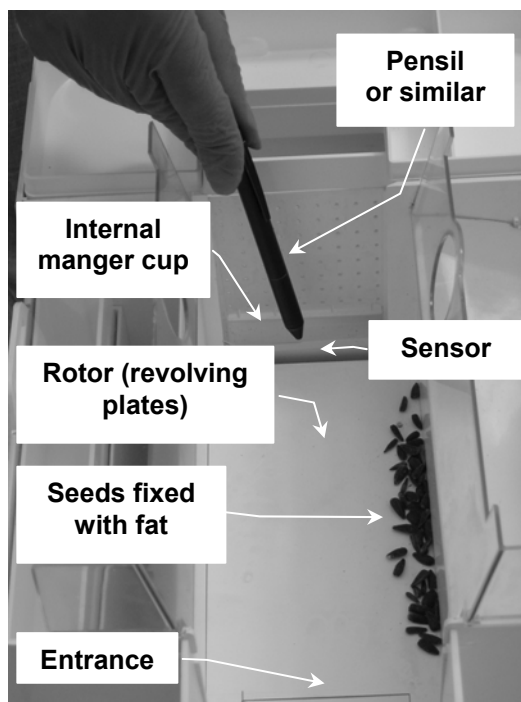
**Use the images on page 9, as reference to follow the succession of the operations required for the pasturing of the device.**



**Photo 2 - Application of fat and sunflower seeds on the revolving pate**



**Photo 3 - Application of fat and sunflower seeds on the other three revolving plates**



**Photo 4 - Manger**



**Photo 5 - Big feed-holder**



**Photo 6 - Little feed-holder**



**Photo 7 - Food on the ladder**

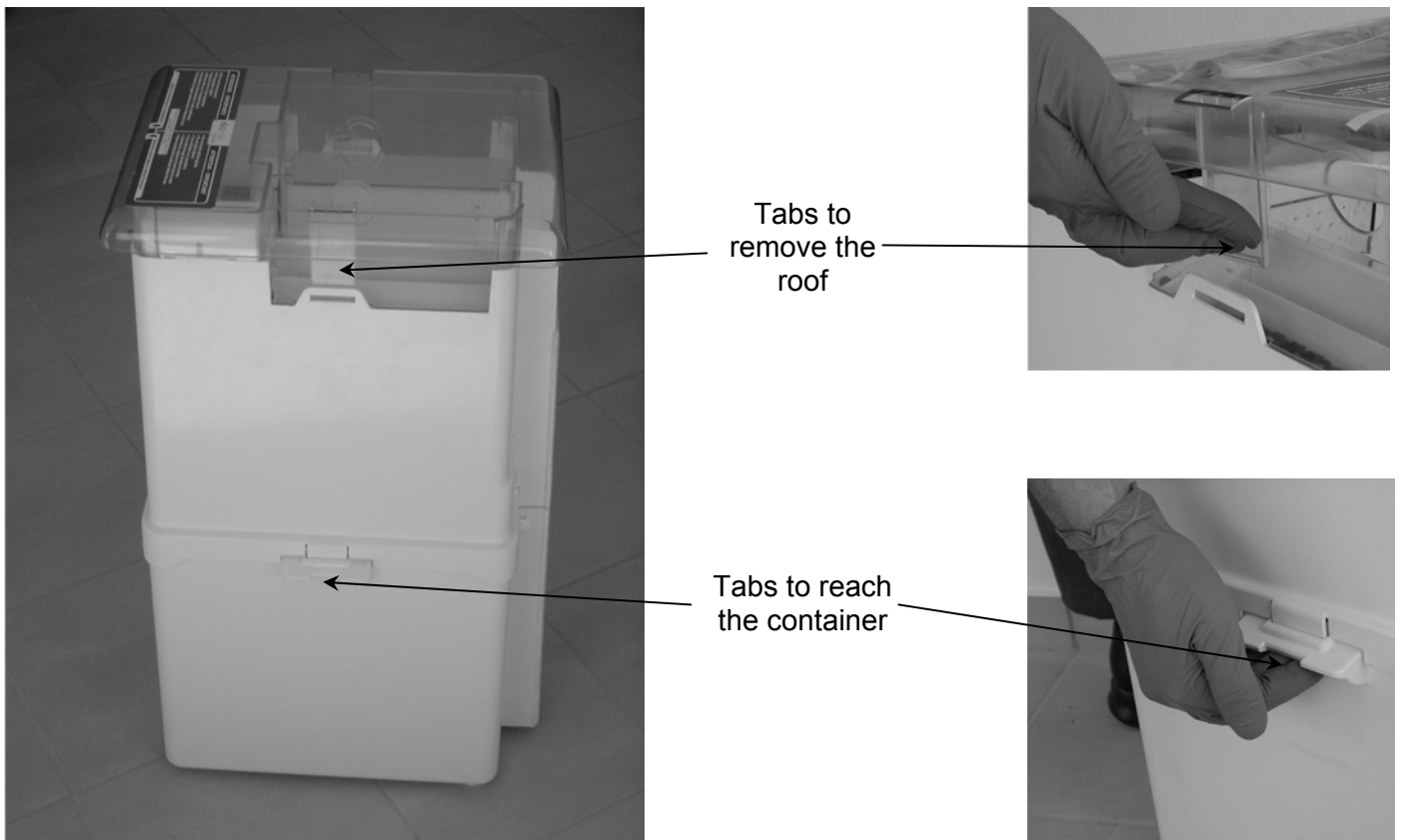


**Photo 8 - Ekomille ready, without cover**

## 6 - CAPTURING CONTAINER AND HYGIENIC SAFETY

- a) Press on the bottom part of the hooking tabs (**photo 9**) and lift them to reach the capturing container. Do the same on the proper hooks (**photo 9**) to remove the roof.

**Photo 9 - Hooking tabs for bucket and roof**

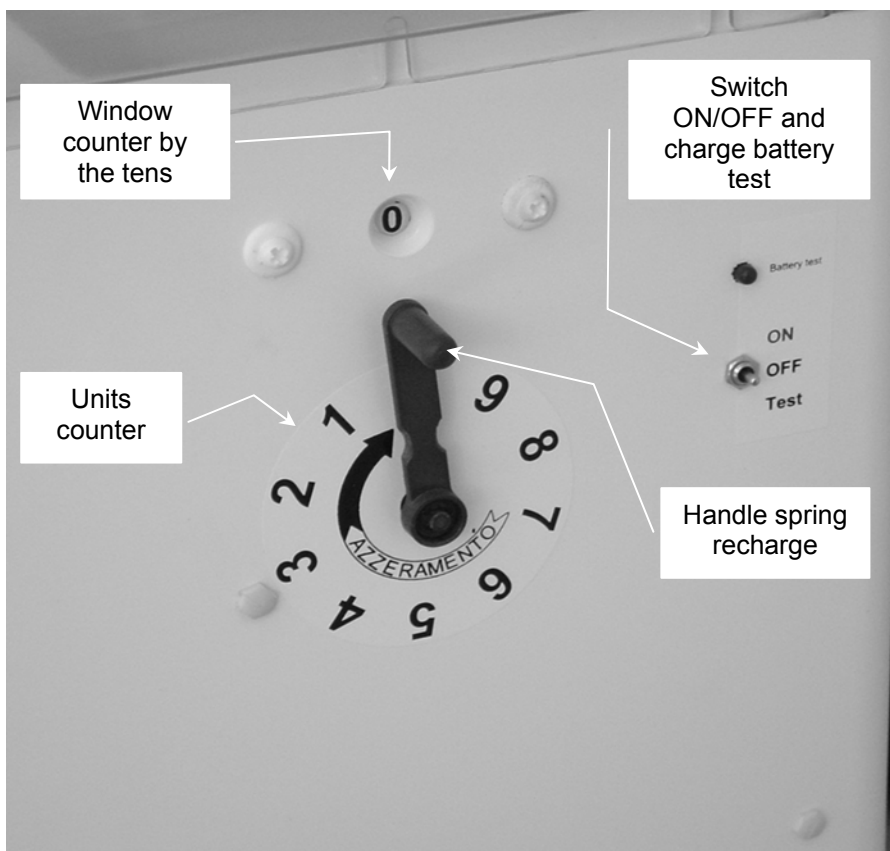


- b) If you want to add water in the capturing container the level of the liquid must be between the signs printed inside the bucket (*almost 18 litres*).
- c) The **ekofix 40** has to be added to the water as indicated in the table at page 6.
- d) Do not use disinfectant based on acid, formalin, bleach, or irritating substances, which **damage** the efficiency of the device.
- e) Use the small shovel given in the kit to pick up the captured animal and put it directly in the plastic bag.

## 7 - CAPTURING COUNT AND VERIFICATION

- a) The autonomy of the spring mechanism situated in **ekomille** permits more than 80 capturing; in spite of this, we advise to always reset the dial by the handle of spring recharge (photo 10) **WITHOUT FORCING IT**, after each emptying out; this operation permits an easier control of the new capturing made by **ekomille** (numbers around the handle indicate the units and numbers in the window over the handle indicate by the tens).
- b) ATTENTION! Occasionally, the special setting of the sensor may provoke the starting of the device which will signal false capturings, caused by casual bumps or by insects of a remarkable size.

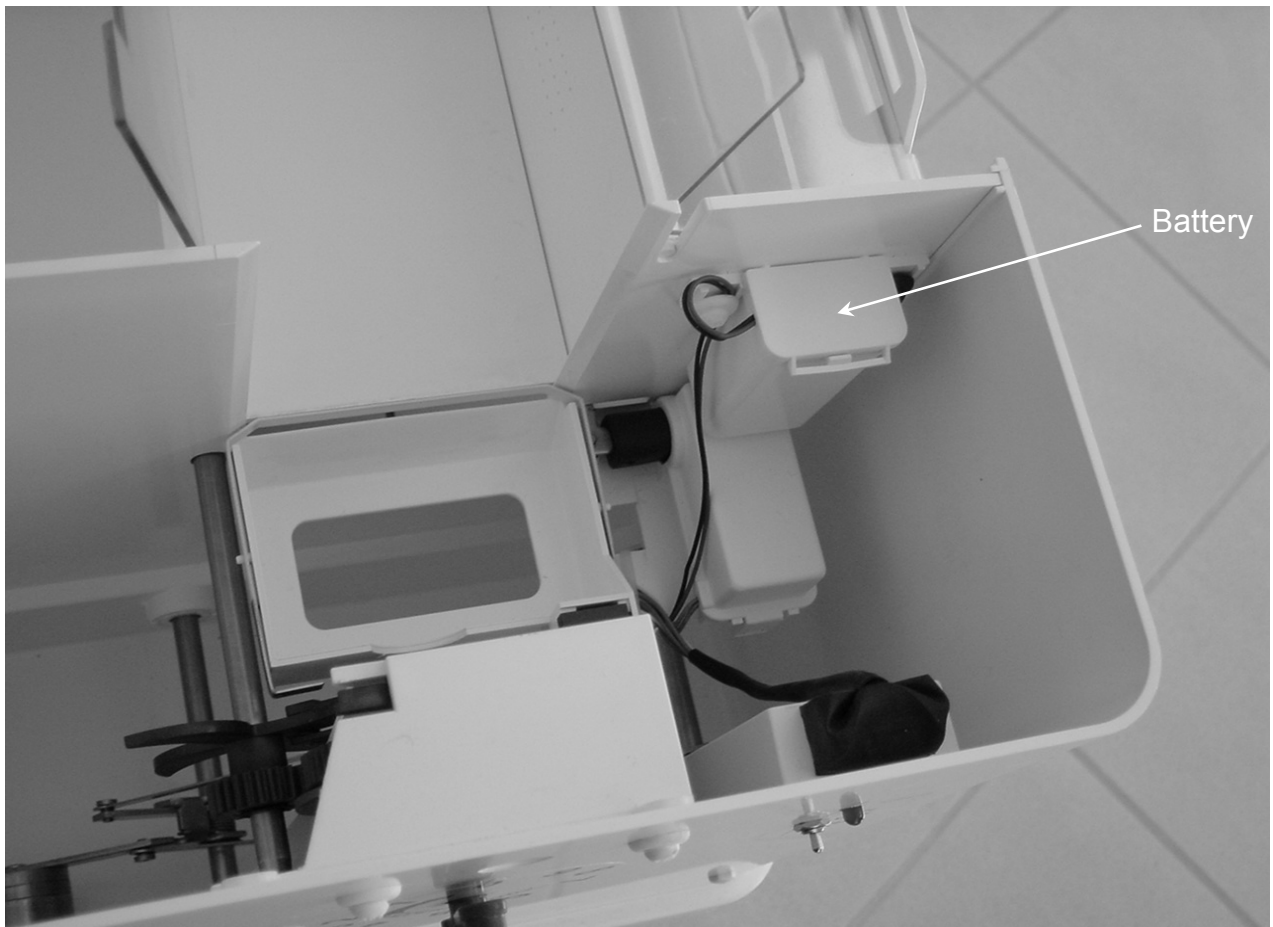
**Photo 10 - Capturing count and verification**



## 8 - BATTERY AND FUNCTIONING TEST

- a) The 9 volts alkaline battery guarantees over 5.000 capture cycles.
- b) Push the switch tab toward the bottom, at *test* position to verify the charging of the battery (**photo 10**); if the bulb (*red led*) switches on the battery has enough power to make a capture.
- c) Remove the roof, the upper container, the manger, the battery container plug to change it (**photo 11**). Then detach the battery from the connector **softly** and change it with a new one having the same characteristics. Re-assemble the device by doing the above said operations in inverse sequence.

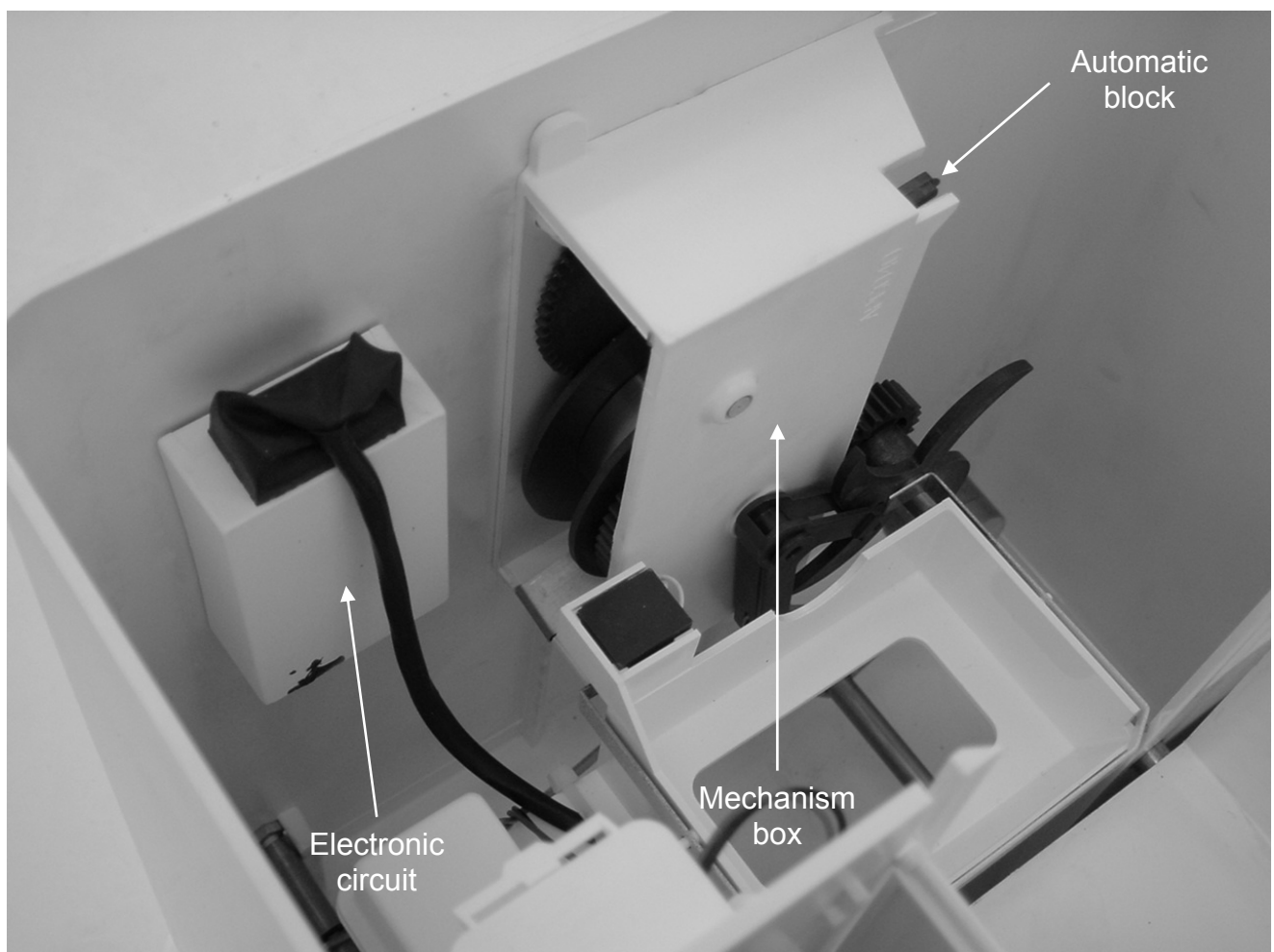
**Photo 11 - Battery Cradle**



## 9 - MECHANISMS AND RECHARGE OF THE MOTOR SPRING

- a) The mechanisms do not need any maintenance. The spring has an autonomy of over 80 capture cycles and it is enough to turn the handle in clockwise till reaching of the **0 (zero)**, either on the counter by the tens in the window or on the unit counter, **WITHOUT FORCING IT** to recharge it (*photo 10*).
- b) To avoid the dechargement of the motor spring, the mechanisms have an automatic block (*photo 12*) which start working as soon as you remove the upper food container and it stop working as soon as you replace the container.

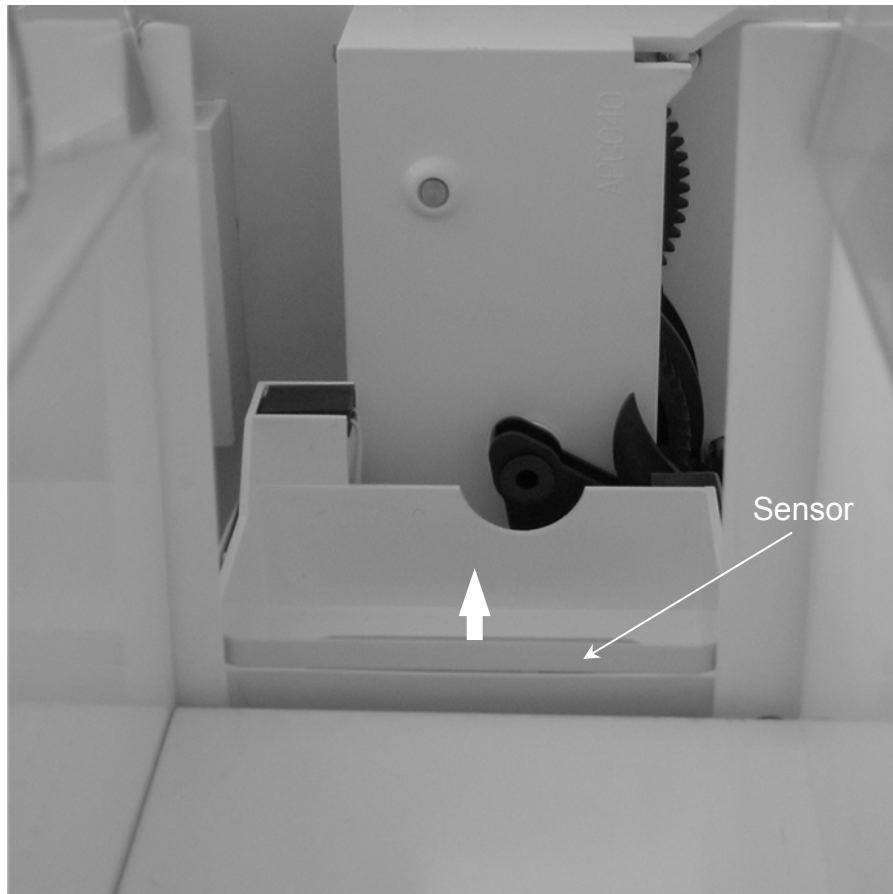
***Photo 12 - Mechanism box***



## 10 - SENSOR

Occasionally and with the device switched off, make sure that there is no dirtiness which obstacles the movement of the sensor (**photo 13**). To clean the sensor, move it **SOFTLY** and slightly towards the top to eliminate the dirtiness.

***Photo 13 - Sensor***



## 11 - MACHINE CLEANING

- a) The container of **ekomille** must be cleaned only in case of bad odour. Use gloves and normal products for cleaning and disinfecting houses. Rinse abundantly to eliminate the smell of the used products.
- b) Avoid placing the electrical and mechanical parts in water when the device is unassembled.
- c) Let the cleaned parts dry well.

## 12 - ACCESSORIES AND SPARE PARTS

### ACCESSORIES ON REQUEST

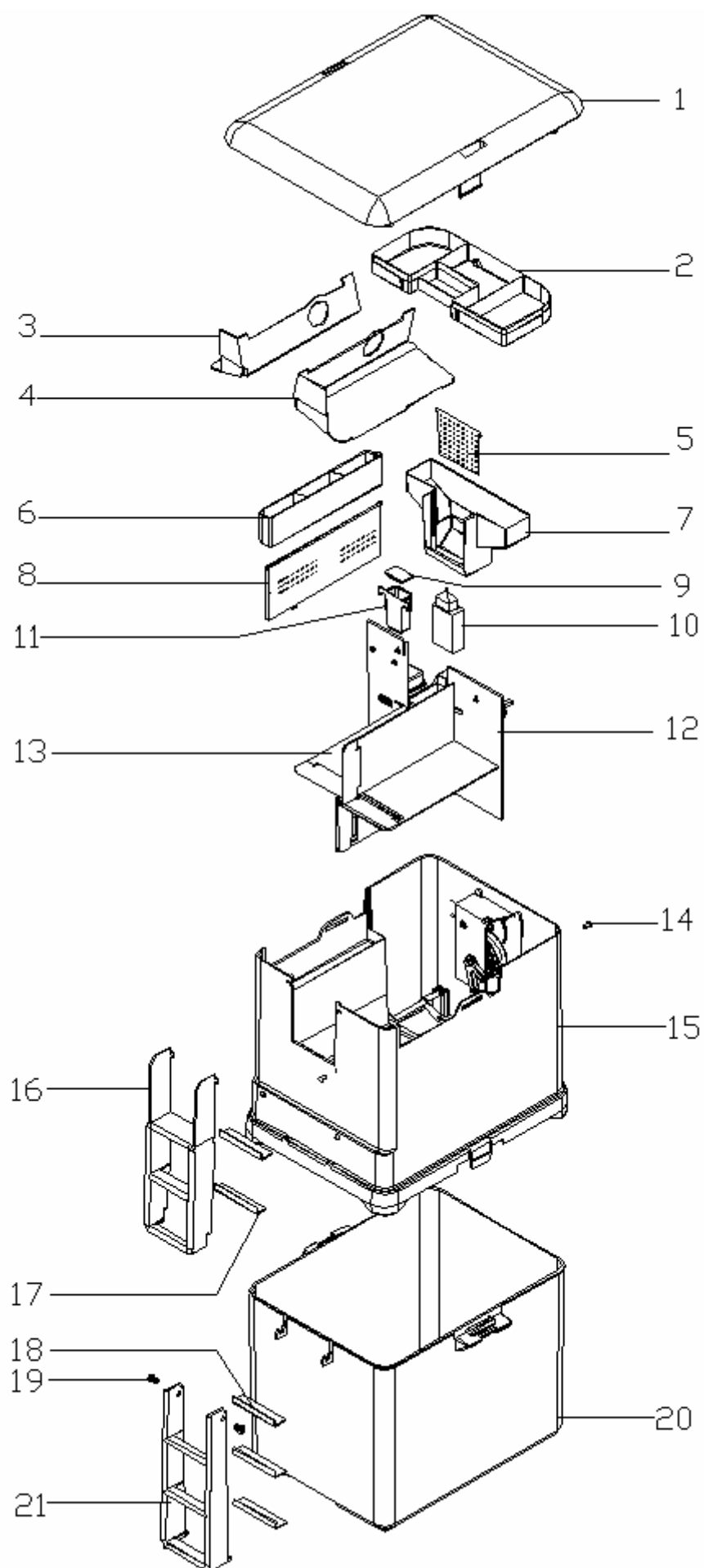
Rif	Cod. APICE	Description	Notes
1	APG A01	<b>Carring handle</b>	For easy carrying of ekomille or ekologic
2	APG R03	<b>Bait kit</b>	Included in the kit
3	APG A02/A03	<b>Ekobox L</b> cream or green + fixing kit	Light type (A02 cream - A03 green)
4	APG A04/A06	<b>Ekobox P</b> cream or green + fixing kit	Heavy type (A04 cream - A06 green)
5	APG A10	<b>Ekofix 40</b> - 10 lt. bottle	Antiputrefaction liquid for first supply
6	APG A11	<b>Ekofix 100</b> - 2 lt. bottle	Antiputrefaction liquid for filling up
7	APG A12	<b>Ekofix 100</b> - 5 lt. bottle	Antiputrefaction liquid for filling up
8	APG A07	<b>Ekoup</b> - iron structure	To hang ekomille or ekologic
9	APG A08	<b>Ekoin</b> - metal anchor	To fix ekobox in the ground
10	APG A09	<b>Ekoside</b> - metal hook	To hang ekoup, ekobox, ekomille, ekologic

### SPARE PARTS

Rif	Cod. APICE	Description	Notes
1	APG 001	Roof	
2	APG 010	Big feed-holder	
3	APG 008	Left covering	
4	APG 009	Right covering	
5	APG 013	Manger division	
6	APG 011	Little feed-holder	
7	APG 012	Manger	
8	APG 016	Mobile wall	
9	APG 015	Battery lid	
10	APG 086	Electronical circuit	
11	APG 028	Battery supporter	
12	APG 014	Division	This part must be changed at our factory
13	APG 017	Rotor (revolving plates with mobile end parts)	This part must be changed at our factory
14	APG 035	Screw shafts	
15	APG 002	Superior section (mechanism container)	This part must be changed at our factory
16	APG 003	Upper ladder	
17	APG 056	Short ladder insert	
18	APG 057	Ladder insert	
19	APG 083	Fixing scrivet	
20	APG 005	Inferior section (bucket)	
21	APG 006	Lowly ladder	

**IMPORTANT:** *the manufacturer declines any responsibility for damages and malfunctioning of any kind caused by the use of accessories and spare parts that are not original.*

**Fig.1 - Blow-up diagram**





## 13 - GUIDE TO PROBLEM SOLUTION

If your **ekomille** does not work correctly check if:

- The position of the switch is high, on “ON” (**see photo 10**);
- The red led lights up when you push the switch towards the bottom (*when it does not light up, change the battery, as indicated at **page 12***);
- The sensor moves freely (**see page 14**);
- The big feed-holder is inserted in its place correctly (**see blow-up diagram - figure 1 - number 2**);
- The mobile end part of the revolving plate is lined with the plate itself (*on the contrary, remove the obstacle which does not permit it - (see **figure 1 - number 13**)*);
- The container is full and it does not allow for other capturing;
- All the food in the manger has been eaten while the device was switched off (*in this case refill the manger with new food*) - (**see figure 1 - number 7**).

**WARNING:** **ekomille** must be subjected to a complete maintenance every year. Such maintenance consist of checking every mechanical and electric part.

**APICE srl** is disposed to carry out the maintenance for you.

## 14 - FREQUENTLY ASKED QUESTIONS

### a) Why not carry on using poisons?

Poisons have some disadvantages that are worth remembering:

- Their efficiency is limited in time and, for this reason, they need to be used more than once during the year;
- Poisons must become more powerful every day because of the capacity of adaptation of animals;
- We can never know where the poisoned animal will go to die, so you can find the carcass anywhere;
- Children and other animals can be poisoned instead of mice and rats, by an accidental ingestion of the substances used;
- Poisons can cause environmental pollution, by seeping through the ground and through the water-courses.

**b) Have experiments been done “on field” to verify the efficiency of ekomille?**

Lots of experiments, even at an international level, have been done to validate the efficiency of **ekomille**. It has obtained a series of recognitions and certificates, such as the one year experimentation with the **Zoological Garden of the City hall of Rome**, followed by the one of “**La Sapienza**” **University** where, after previous failures with the use of poison, **ekomille** has done a very good job, by capturing a large number of mice and rats - 807- even in presence of a very critical situation.

**c) Mice and rats get used to poisons; what about their getting used to ekomille as well?**

The capacity of adaptation of mice and rats is excellent. For this reason the planning of **ekomille** has considered this fact as a primary factor of importance. Today we are glad to declare that the problem has been solved in a brilliant way!

**d) Is Ekomille easy to use?**

**Ekomille** has been studied to be used by anybody, in any place or environment. Once it is activated, it is enough to check if there are captured animals by checking the external dial, visible even at distance.

**e) Where do the captured mice go?**

The captured mice go to the bottom part of **ekomille** (*capturing container*); in the container it is possible to add water and antiputrefaction liquid **ekofix 40**. The latter is also necessary to keep the device completely hygienical.

**f) Is this a decisive solution or do I have to buy anything else?**

**Ekomille** is the complete and decisive solution to the problem of mice and rats infestation (rat- extermination) and it is sold with all the necessary components for its activation. To make its use easier a complete series of accessories is available.

**g) Speaking about costs, is rat-extermination more convenient with classical poisons or is it the definitive use of ekomille better?**

The cost is one of the strong points of **ekomille**. In fact, with a low and definitive cost you can buy a “machine” which **constantly monitors** the territory, in realizing an efficient service of prevention. The protection offered by **ekomille** is always active and it does not decrease in time, but it increases. This permits the maximum money saving and the maximum safety.

**h) How much can I save if I use it?**

The saving with **ekomille** is immediately evident:

- It has **only one cost** which does not repeat in years;
- Efficiency and efficacy are **unlimited** in time;
- It captures quickly and continuously every mouse or rat which reach the place, **without allowing it to cause any damage**;
- **it avoids dangers deriving from the use of chemical substances.**

## 15 - GUARANTEE

**Ekomille** has been subjected to careful testings. **APICE srl** guarantees the device, in case of defects of materials and/or manufacturing, for 36 (thirty-six) months which duration begins on the date of purchasing by the customer, indicated on the fiscal certificate.

The guarantee does not cover defects ascribable to:

- lack of observance of the instruction regarding the installation and the position of the device;
- lack of skill in using it;
- accidental causes or careless acts of the purchaser (especially for the external surfaces);
- modifications or repairs practiced by a staff not entitled by **APICE srl**;
- use of equipments, accessories and spare parts not supplied by **APICE srl**;
- inadequate maintenance;
- damages caused by atmospheric phenomena (i.e. lightnings) or by any other reason unrelated with the product.

**APICE srl** shall either repair or replace, at its discretion, the parts which show a manufacturing defect during the period covered by guarantee, on condition that our firm receive notice of the defects within 8(eight) days after their finding, otherwise the guarantee will decay.

The repair is done exclusively at our centre, where the device must arrive free on board (carriage expenses are to be charged to the user, unless different agreement) and it does not include the eventual cleaning of the functioning parts.

Defects not clearly assignable to materials or manufacturing will be examined exclusively at our centre.

If the complaints results unjustified all the reparation and/or substitution expenses will pay by the purchaser.

The fiscal certificate of purchasing must be showed to our technical staff which does the repairing or it must be sent together with the machine that has to be repaired.

Any use not in conformity with this instruction manual and accidental damages due to negligence during the transport or inadequate treatment will result in the decline of the responsibility and form of guarantee of the Manufacturer's part.

When the guarantee period is terminated technical assistance will be however carried out, charging the user of the costs of substituted parts and of use manufacturing, according to the rates in force.

**APICE srl** declines any responsibility for damages to people or things caused by a bad or incorrect use of **ekomille**.

For any controversy, it is the competence of the Italian Court of Justice of Lanciano (CH).

## 16 - APICE PRODUCTS AND SERVICES DISTRIBUTION

Products and services of the firm **Apice srl** have been granted, **exclusively on the national territory**, to the firm:

# Ekommercé®

**Ekommercé srl - Zona Industriale Saletti - 66041 Atesa (Ch)**


**tel 0872.888058 - fax 0872.888056**



Website: [www.ekommerce.it](http://www.ekommerce.it)

e-mail: [ekommerce@ekommerce.it](mailto:ekommerce@ekommerce.it)

## 17 - DECLARATION OF CONFORMITY

The manufacturer **APICE srl** - Zona Industriale Saletti, snc - 66041 Atesa (CH) declares and takes the responsibility for the electromechanical device which captures in a continuous way called **ekomille**  as described in this manual:

Serial Number: .....

Year of construction: .....

Checked by: .....

Checked on date: .....

is in conformity to the REGULATIONS **89/392/EEC, 91/368/EEC, 93/44/EEC e 93/68/EEC**.



The present declaration is issued in accordance to the regulation CEE 89/392/EEC according to attachment II A.

Atessa (CH), .....

